

Reverse proxy on Windows IIS

Windows IIS can be configured to act as a **reverse proxy server**. There are a few pretty outdated guidelines available on the official Microsoft documentation where you can find additional information.

- [Reverse Proxy with URL Rewrite v2 and Application Request Routing](#)
- [Setup IIS with URL Rewrite as a reverse proxy for real world apps](#)

Install IIS extensions

To set up a reverse proxy routing capabilities for IIS, first of all, you need to download and install two additional extensions:

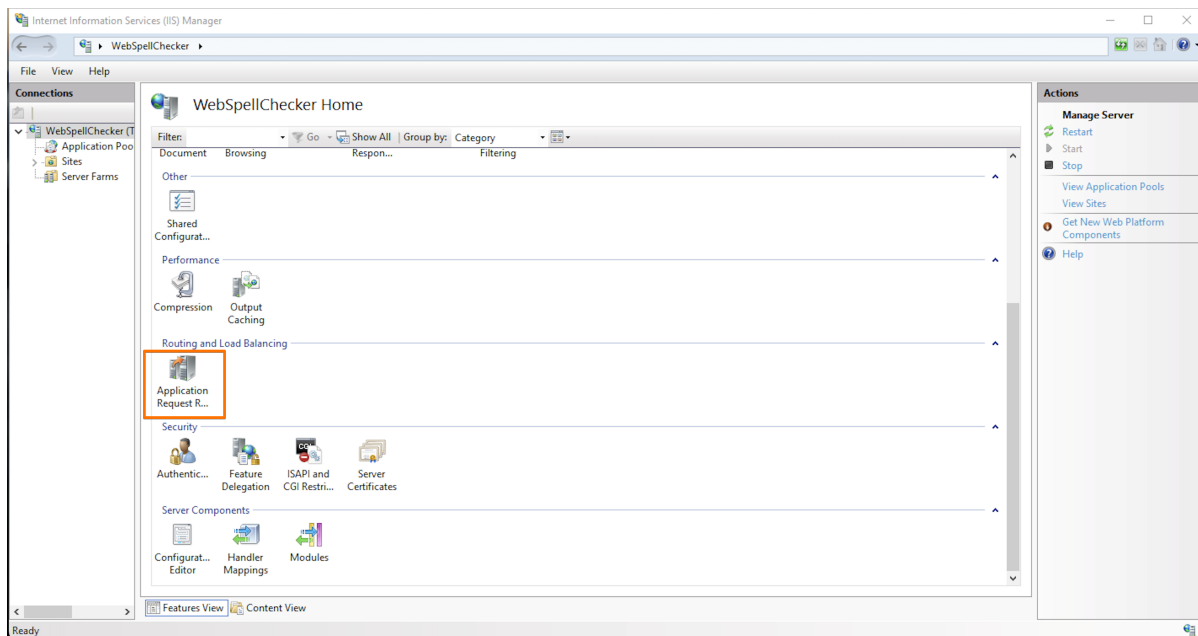
- [URL Rewrite](#)
- [Application Request Routing \(ARR\)](#)

After successful installation of extensions, two additional options, **URL Rewrite** and **Application Request Routing**, will appear on the IIS dashboard.

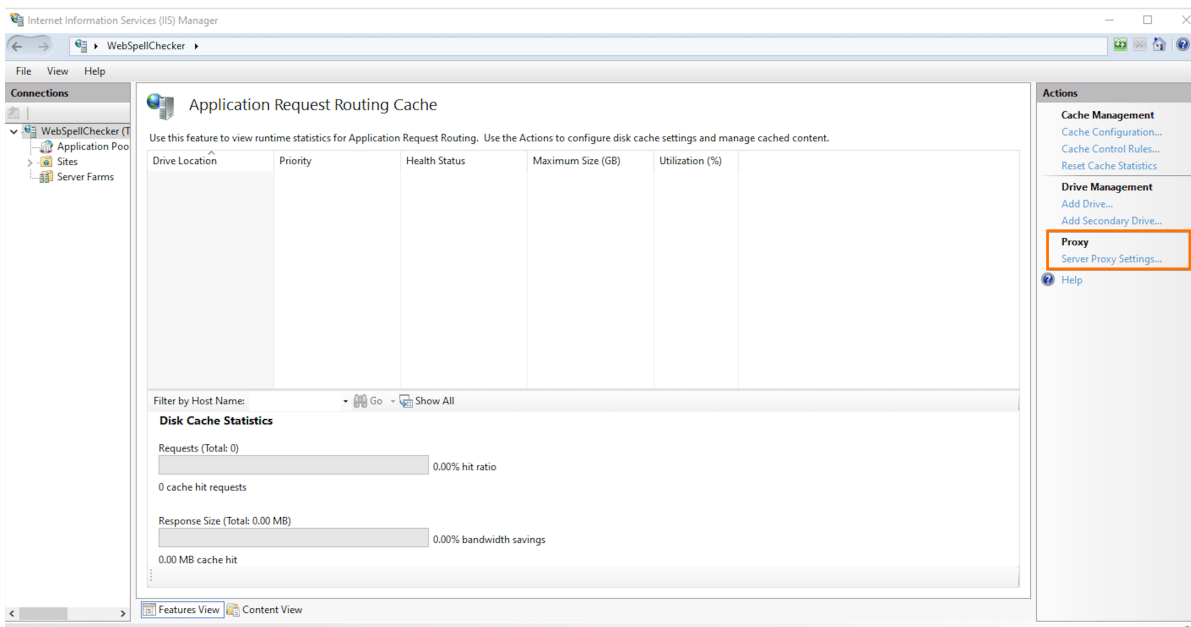
Enable proxy settings - ARR

The IIS proxy setting is disabled by default. You need to enable it.

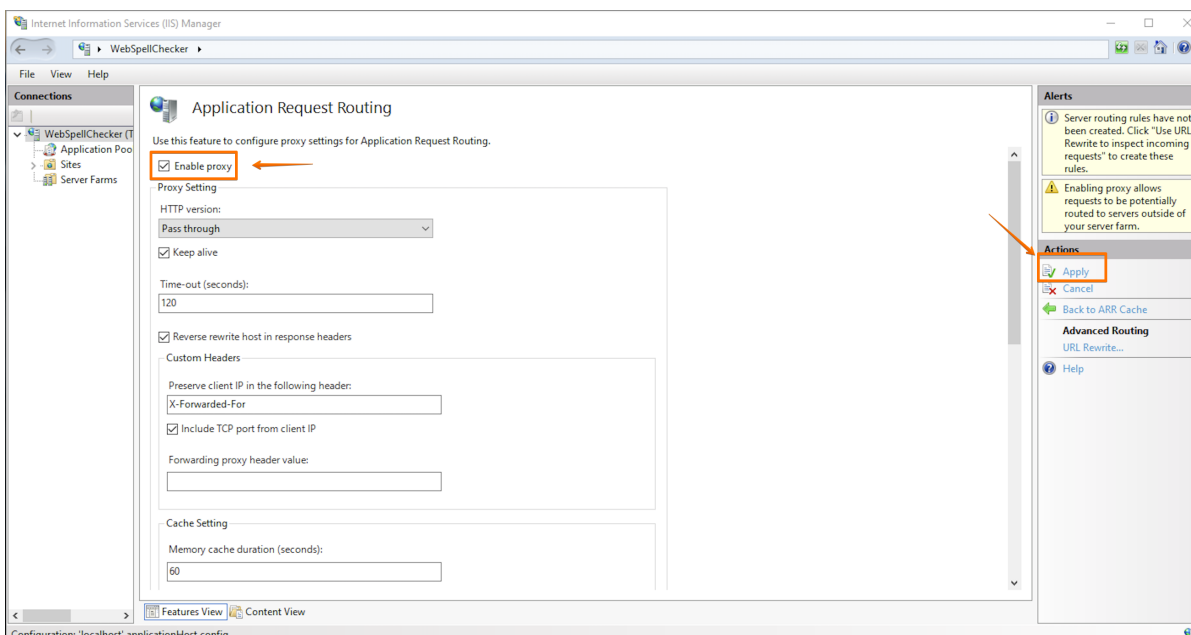
1. Open IIS Manager.
2. In the **Feature View** section, double click on **Application Request Routing**.



3. On the right sidebar under the **Proxy** section, select **Server Proxy Settings...** action.



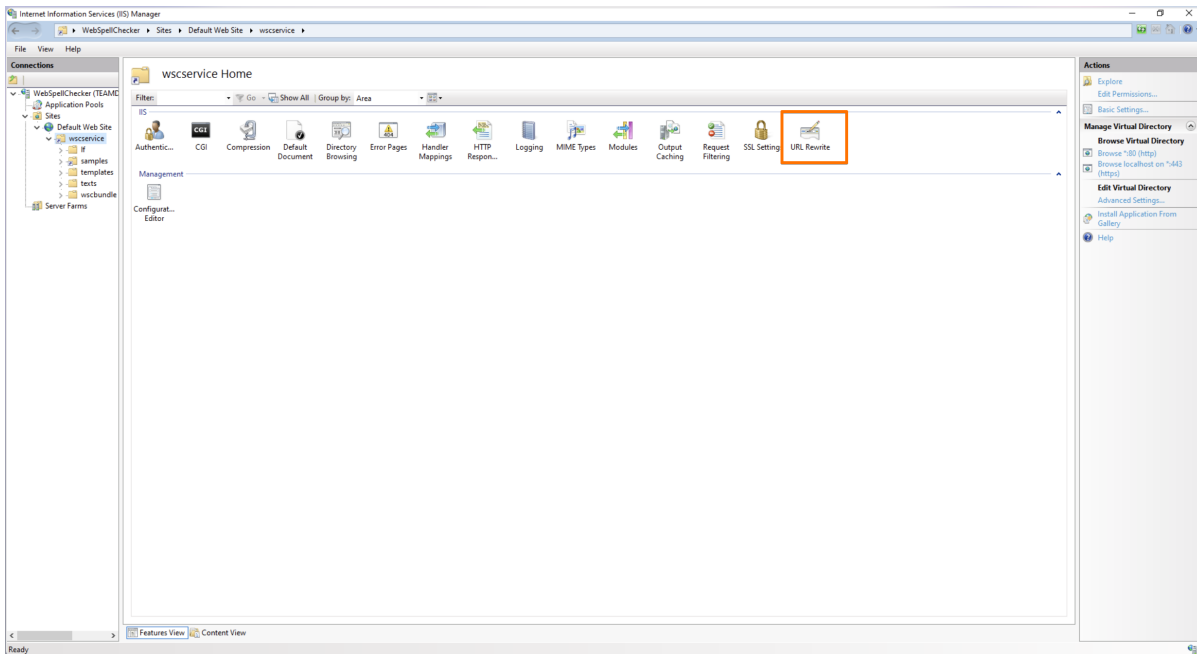
4. Check **Enable proxy** check box. And then on the right sidebar with actions, click **Apply** to save changes.



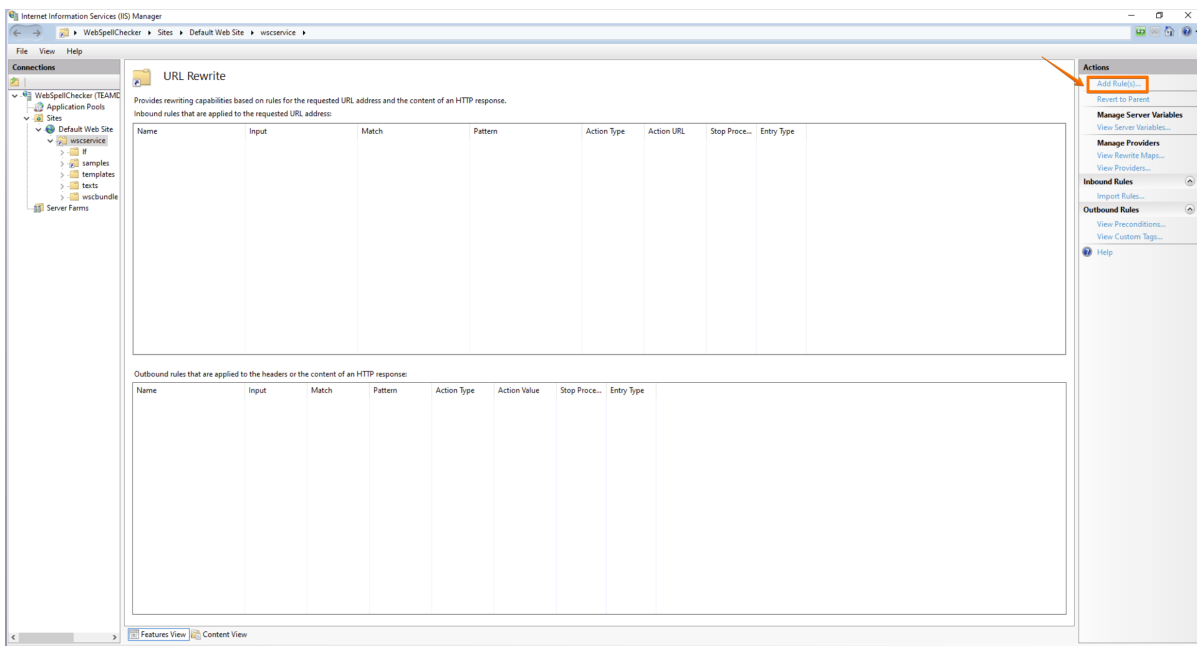
URL Rewrite

To create a new inbound rule, follow these steps:

1. Go to the IIS Manager, find **Default Web Site** and select **wscservice** virtual directory (for older versions it may differ, e.g. **spellcheck**) assuming that WebSpellChecker is deployed there.
2. In the Feature View, click **URL Rewrite**.



3. Click on **Add Rule(s)...** on the right sidebar with actions.



4. In the **Add rule(s)** dialog, select **Blank rule** template for inbound rules and click **OK**.

5. Create **Inbound rule** for the parent website with the following settings:

- Pattern: **api(.*)**
- Check the **Ignore case** box.
- Rewrite URL: **http://localhost:2880/{R:1}** where **http://localhost:2880/** is the path to the application server which listens to the 2880 port and **{R:1}**.



If you previously configured the SSL connection for AppServer, e.g. accessed the service entry point via **https://localhost:2880/**, it is highly recommended to disable this configuration and rely on the SSL management on IIS. To disable SSL connection for AppServer, go to **AppServer X.xml** file, locate **EnableSSL** tag and change its value to **false**. to apply changes, restart AppServer.

6. Check **Append query string** check box.

7. Check **Stop processing of subsequent rules** check box.

8. Once all is done, click **Apply Rule**.

Verification

In your browser, check **version** and **status** of AppServer to verify if it works properly.

Check the **version**: <https://localhost/wscservice/api?cmd=ver>

```
{ "Copyright": "(c) 2000-2021 WebSpellChecker LLC", "ProductWebsite": "webspellchecker.com", "ProgramVersion": "5.x.x.x x64 master:29de6551 (2806) #371", "PackageVersion": "5.x.x.x master:25fe1fc (693) #438" }
```

Check the **status**: <https://localhost/wscservice/api?cmd=status>

```
{
  "SpellCheckEngine": {
    "active": true
  },
  "GrammarCheckEngine": {
    "active": true
  },
  "ThesaurusEngine": {
    "active": true
  }
}
```