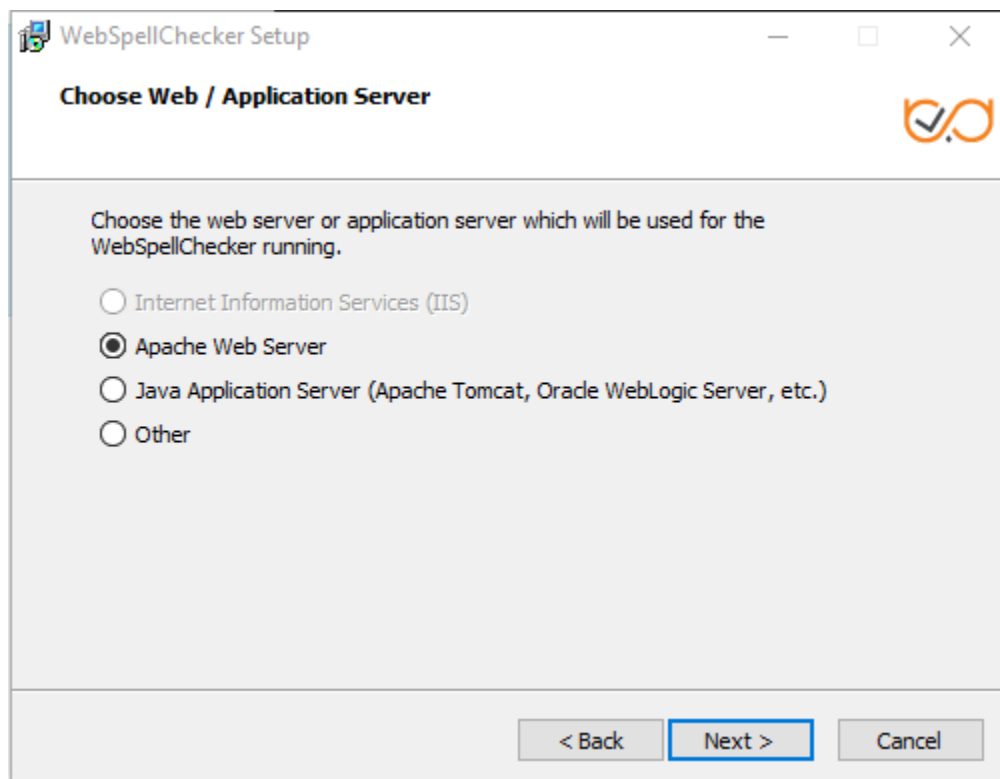


IIS web server option is grayed out during the installation

Problem

During the installation of the Server package, the Internet Information Services (IIS) web server option is grayed out and cannot be selected.



Solution

The main reason why IIS might be grayed out and inactive during the installation is that IIS might be disabled on your Windows machine. To solve the issue:

1. Check if IIS is enabled on your machine. If not, proceed with the defaults steps to enable it on your version of Windows.
2. Once IIS web server is enabled, make sure it is started.
3. Try to perform the installation again. IIS option should be active and available for selection.

Related articles

- [Installing WebSpellChecker v5.16.0+ on Windows with IIS](#)
- [Installing WebSpellChecker v5.5.3+ on Windows with IIS](#)
- [IIS web server option is grayed out during the installation](#)
- [Installing WebSpellChecker on Windows with IIS](#)